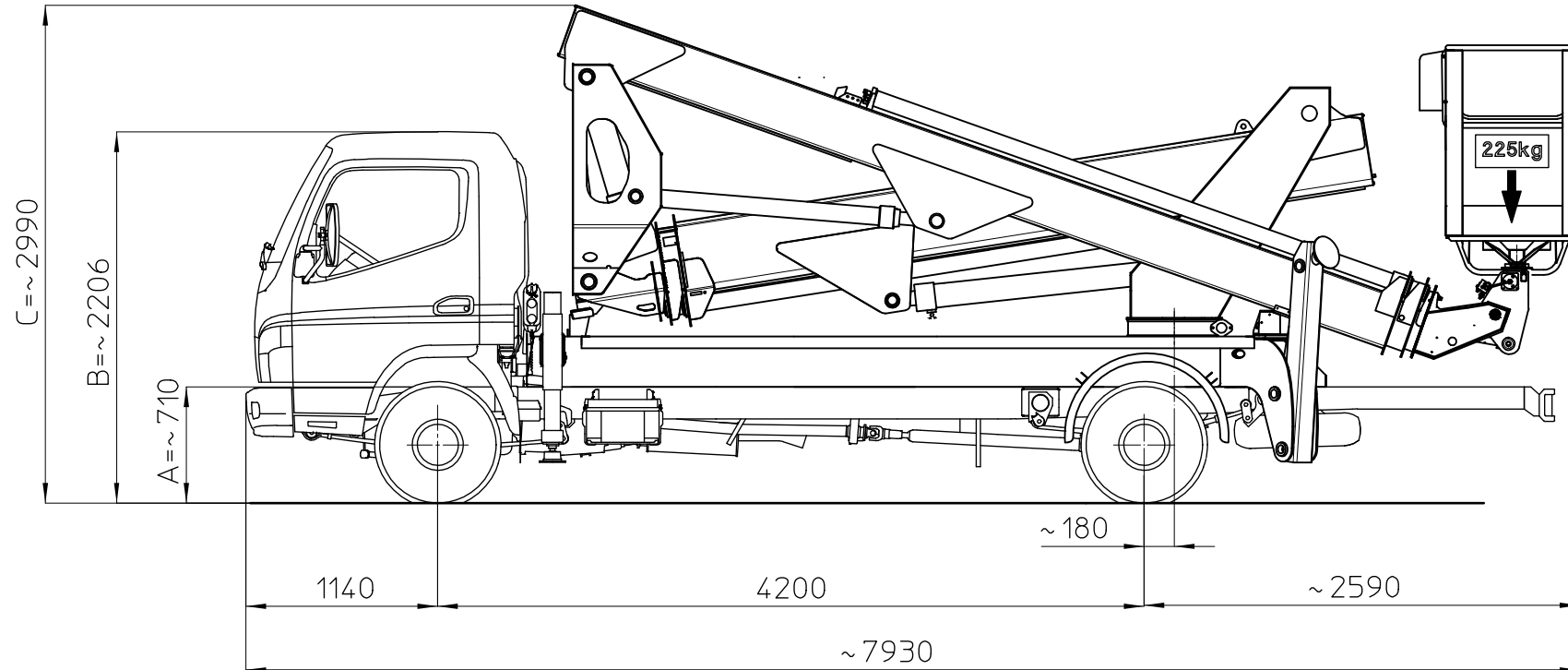


# MULTITEL MX270

MITSUBISHI FUSO CANTER FE85S-7C15N Euro5

D44257

Ente	Rev.	Descrizione	Data	Dis.	Contr.	Ap.AQ
MRK	1	EMISSIONE	16-02-10	P.F.		
INGOMBRO - SCHEDA 54/1 - Rev. 0 - 15/12/00						



I - Le quote riportate in disegno sono indicative e possono subire variazioni. In particolare le quote A-B sono relative alle dimensioni dell'autocarro, quindi devono essere verificate sullo stesso. La quota C (altezza totale) e' subordinata alle quote A-B e non comprende eventuali parti flessibili.

F - Les cotes indiquée dans le dessin sont indicatives et peuvent subir des variations. En outre les cotes A-B sont relatives aux dimensions du porteur, donc elles doivent être vérifiées sur le porteur même. La cote C (hauteur totale) est subordonnée aux cotes A-B est indiquée hors flexibles.

E - The dimensions shown in the drawing are an indication and may undergo changes. Further the dimensions A-B are related to the truck sizes, therefore they must be verified. The dimension C (total height) is subject to A-B and does not include hoses.

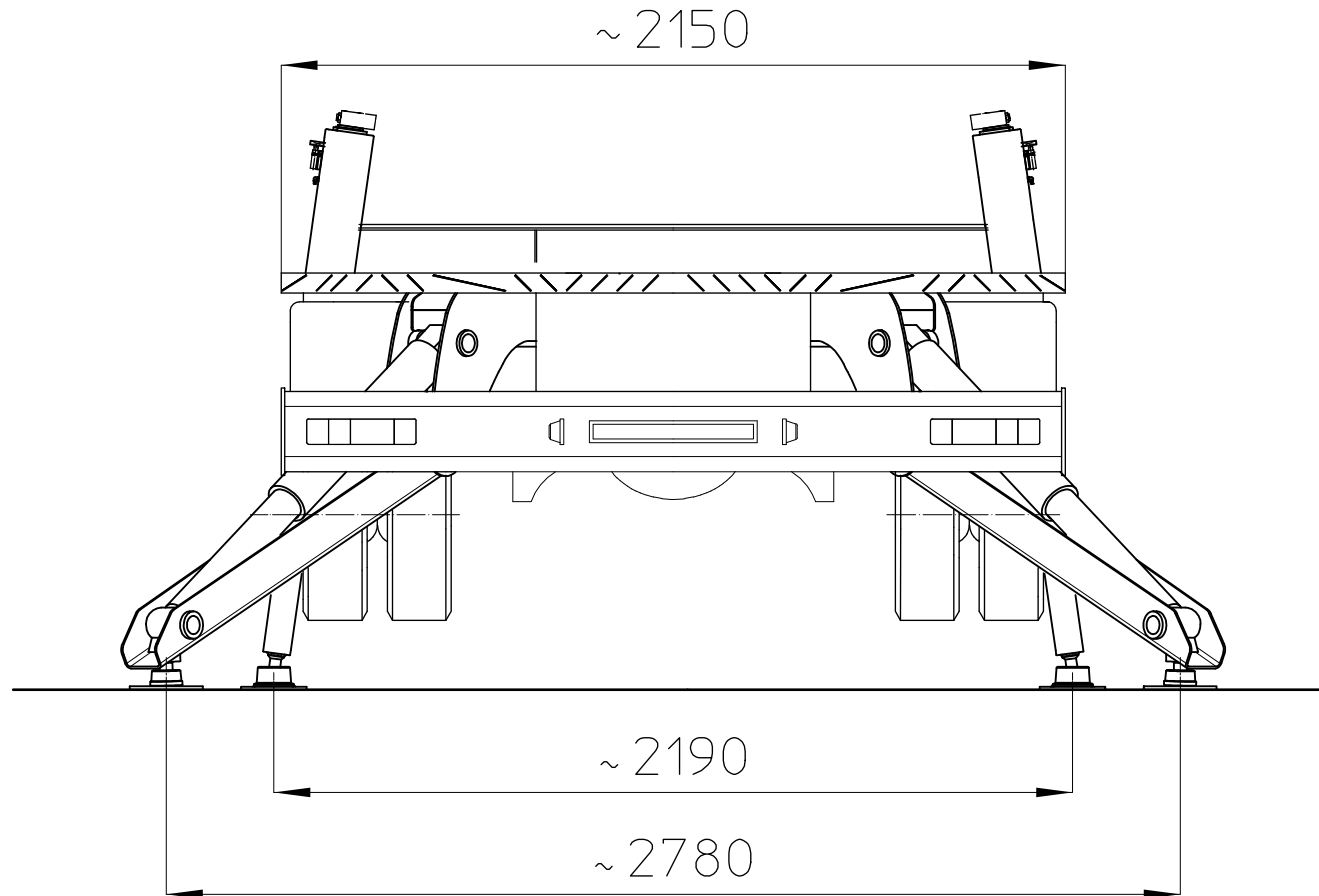
D - Die Maße, die in der Zeichnung gezeigt werden, sind eine Anzeige und können Änderungen durchmachen. Die Abmessungen A-B betreffen die Fahrzeugmasse, daher sollen sie geprüft werden. Die Abmessung C (Gesamthöhe) hängt von A-B Abmessungen ab, die schlauche sind ausgeschlossen.

	STABILIZATION TYPE	CAGE PAYLOAD (kg)	
		225 kg	
WORKING DIAGRAM	STRAIGHTLINE STAB.	D44316	
	PARTIALLY EXTENDED STAB.		
	TOTALLY EXTENDED STAB.		
	UNDERBRIDGE		
REMAINING PAYLOAD			
STABILIZATION DRAWING		D44258 - D44259	
CHASSIS		1st AXLE	2nd AXLE
UNLOADED WEIGHT:		1680 kg	925 kg
MAX WEIGHT:		3100 kg	5200 kg
GVW:		7500 kg	
NOTES:			

Ente	Rev.	Descrizione	Data	Dis.	Contr.	Ap.AQ
MRK	0	EMISSIONE	16-02-10	P.F.		
INGOMBRO - SCHEDA 54/1 - Rev. 0 - 15/12/00						

# MULTITEL MX 270

MITSUBISHI FUSO CANTER PTT=7500kg



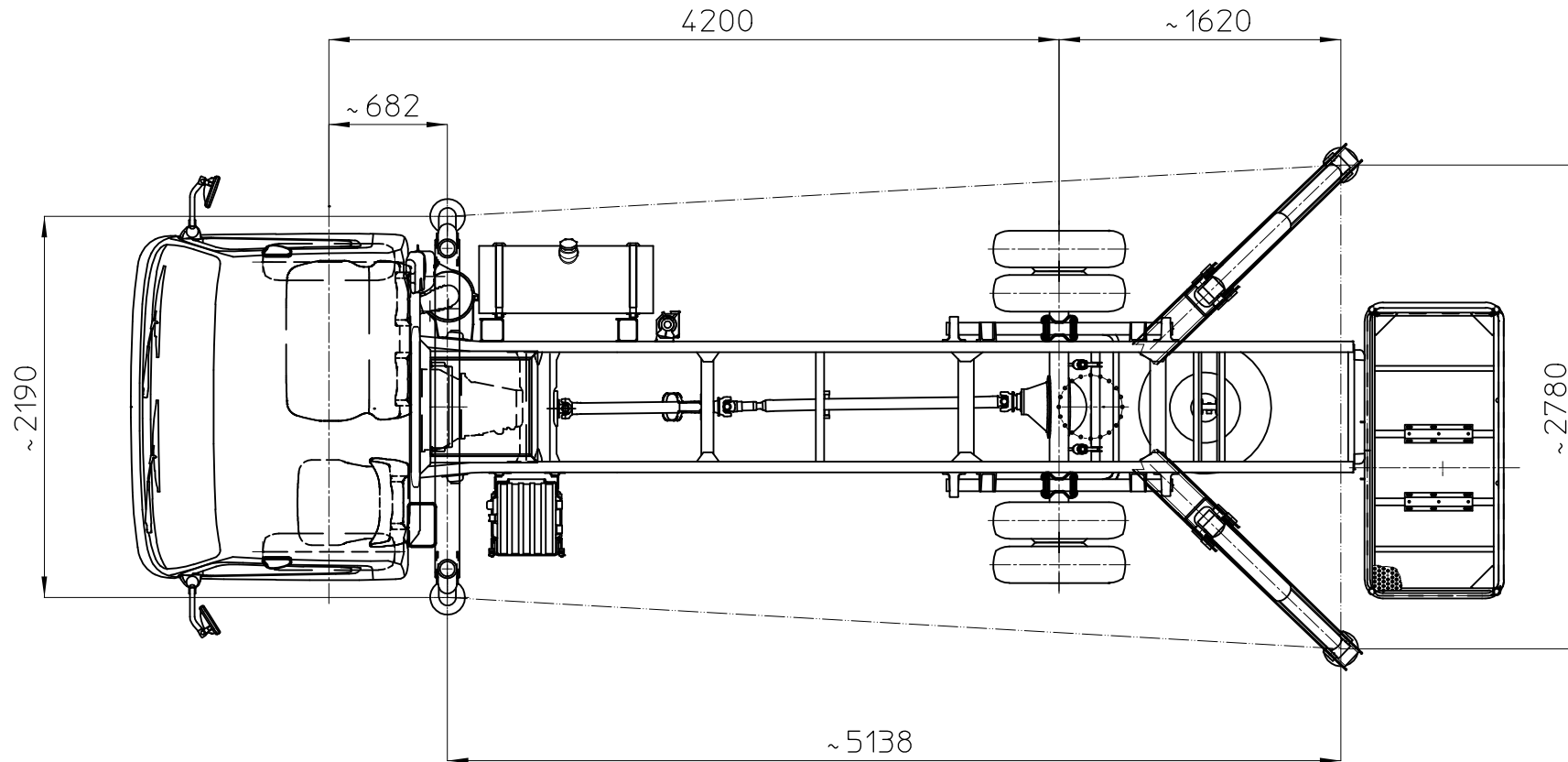
D44258

D44259

Ente	Rev.	Descrizione	Data	Dis.	Contr.	Ap.AQ
MRK	0	EMISSIONE	16-02-10	P.F.		
INGOMBRO - SCHEDA 54/1 - Rev. 0 - 15/12/00						

# MULTITEL MX 270

MITSUBISHI FUSO CANTER PTT=7500kg



# MULTITEL MX 270

Ente	Rev.	Descrizione	05-03-10Dis.	Contr.	Ap.AQ
MRK	0	EMISSIONE	20-01-10	P.F.	
DIAGRAMMA - SCHEDA 54/2 - Rev. 0 - 15/12/00					

225Kg

D44316

SBRACCIO DI LAVORO — 13.3 m ±5%  
 WORKING OUTREACH — 13.3 m ±5%  
 DEPORT DE TRAVAIL — 13.3 m ±5%  
 SEITLICHE REICHWEITE — 13.3 m ±5%

